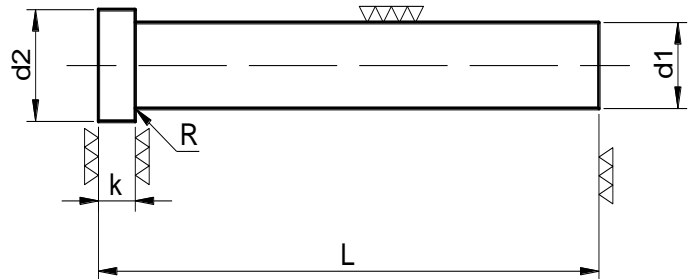


## Punzón cabeza cilíndrica Tipo E

ISO 8020

Forma de pedido:

Punzón tipo E HSS/  $d_1 \times L$



Material	Dureza	
	Vástago	Cabeza
HWS (12% Cr)	62±2 HRC	50±5 HRC
HSS	64±2 HRC	50±5 HRC

d1 m6	d2 +0,0 -0,3	k +0,1 -0,0	L ± 0,2				
			63	72	80	90	100
5,0	7,0	5,0	•	•	•	•	•
6,0	9,0	5,0	•	•	•	•	•
8,0	11,0	5,0	•	•	•	•	•
10,0	13,0	5,0	•	•	•	•	•
13,0	16,0	5,0	•	•	•	•	•
16,0	19,0	6,0	•	•	•	•	•
20,0	24,0	6,0	•	•	•	•	•
25,0	31,0	10,0	•	•	•	•	•

