



## Tope guía hembra **TGH**

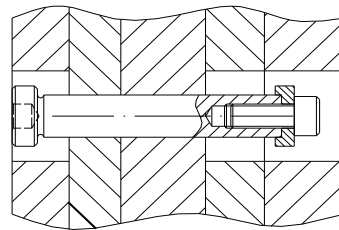
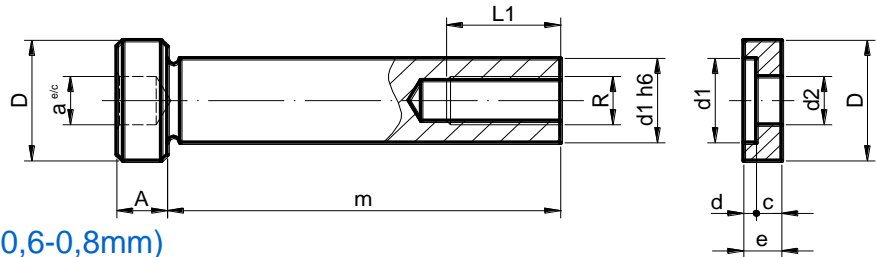
**Material:** 1.7264

**Tratamiento:** Cementación (0,6-0,8mm)

**Dureza:** 46-48 HRc

**Forma de pedido:**

**TGH/ d<sub>1</sub> x m**



d <sub>1</sub>	D	d <sub>2</sub>	A	c	d	e	L <sub>1</sub>	L <sub>2</sub>	R	L								
										40	50	60	80	100	125	150	175	200
14	20	8,5	8	4	2	6	20	18	M8	•	•	•	•	•	•	•		
20	26	13	8	6	2	8	25	25	M12			•	•	•	•	•	•	•